



Public Acceptance of Wind Turbines along Infrastructural Traces (e.g. Highways / Motorways)

Dipl.-Psych. Jan Zoellner
Research Group Environmental Psychology (FG-UPSY)
Otto-von-Guericke-Universität Magdeburg
www.fg-umwelt.de
jan.zoellner@fg-upsy.com



Planning Situation in Germany

- Most sites on-shore are planned (priority and suitability areas for wind turbines on regional level are designated)
- Search for alternative sites is ongoing
- Possible strategies
 - Repowering of old turbines
 - Designation of new priority/ suitability areas
 - Using sites along infrastructural traces



Project Approach

- Analysis of spatial potential, legal aspects and acceptance questions
- Acceptance survey
 - On three different sites drivers were polled personally (n = 260) by using a standardized questionnaire



Bundesministerium
für Umwelt, Naturschutz
und Reaktorsicherheit



bosch & partner

Bosch & Partner GmbH
Hannover Herne München

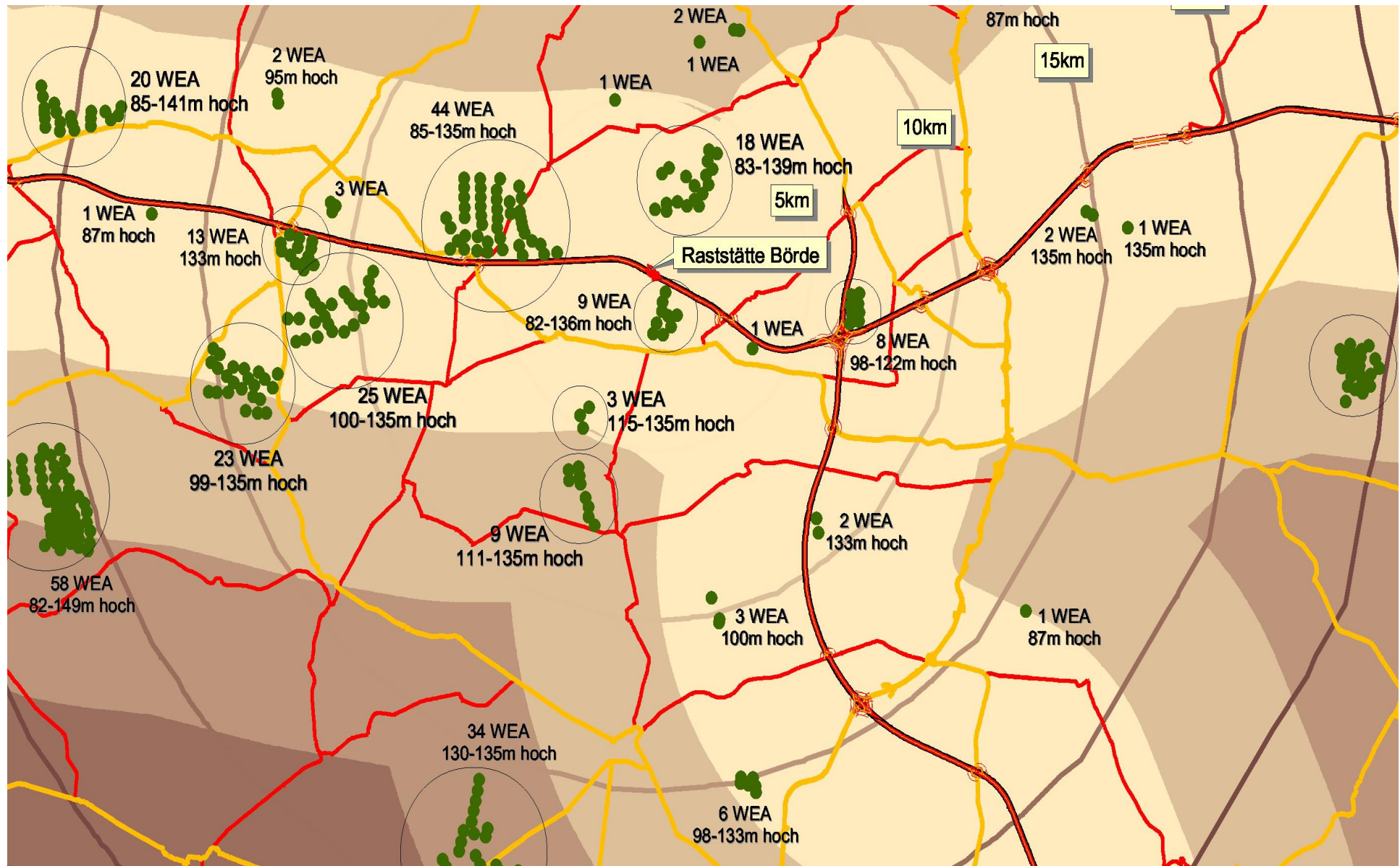


FORSCHUNGSGRUPPE
UmweltPsychologie













Results I ,implicit attention‘

- First interview question on the parking space:
- ‘Please name three remarkable landscape characteristics / elements (such as buildings, forest, mountains etc) that you got aware of the last ten minutes’ –
- 40 % did not name wind turbines....



Results II ,acceptance issues‘

- 75 % support Wind Energy in general
- 54 % support turbines along highways
- 25 % reject turbines along highways
- 48 % say that wind turbines are disfiguring the landscape



Results III ,threat and attention shift‘

- ‘I feel threatened for a wind turbines could tumble down and dump on the motorway’
- ‘I feel distracted by the lights (in the evening/ at night)’
- ‘I feel distracted by the movement of the blades’
- visual awareness (attention shift); threat experience < 20 – 5 %



Conclusion

- Infrastructural traces offer good sites for wind turbines in principal – with regard to planning, legal and acceptance aspects
- Communication of the advantages (sufficient distances to residential/ urban areas; no noise and shadow effects) might even strengthen the support
-but.....



Open Questions

- Which risk is a society willing to take (referring to 10 % attention shift)?
- If there exist lots of ‘wind turbine-alleys’ along motorways in future, will the attitude change – and in which direction?



Thank you for your attention!

Dipl.-Psych. Jan Zoellner

Research Group Environmental Psychology (FG-UPSY)

Otto-von-Guericke-Universität Magdeburg

www.fg-umwelt.de

jan.zoellner@fg-upsy.com